

kits & partitions

Adapting workspaces to the health crisis to better protect your teams and your clients

duo.
UNLIMITED DISPLAY

MADE IN
NORTH
AMERICA



The World Health Organization recommendations to prevent the spread of the virus in the workplace include

- Ensure that the workspace remains clean and hygienic
- Promote regular and thorough hand washing to staff, suppliers and customers
- Promote good respiratory hygiene in the workplace: display posters, provide hand sanitizer, masks and paper towels

Consult the complete document: Getting your workplace ready for Covid-19

Our solution: simple and affordable kits to

- Promote prevention guidelines
- Provide hand sanitizer, masks and paper towels
- Direct traffic
- Provide changing areas
- Partition desks, dividers



3

Preface

4-desk divider kit
panoramic*
h-line

Portable partition kit
contour.

2-desk divider kit
panoramic*
h-line

Portable half-wall
partition kit
panoramic*
h-line

Welcome kit
& Hygiene station kit
one.r1 / xtension.squared
3x2 /
hard case.M counter

Stationary partition kit
panoramic*
h-line

Portable changing room kit
contour.

& Stationary changing room kit
panoramic*
h-line

1-desk barrier kit
contour.



4

Welcome kit

- 2 **one.r1** retractable bannerstands (31.5" x 79")
- 1 **xtension.squared 3x2** pop-up fabric display
- 1 **hard case.M counter** kit



Easily create your design: the artwork file already includes prevention guidelines

Send us your logo and background and we will customize it for you!



Hygiene station kit

3 essential kits to display prevention guidelines and distribute hand sanitizer



Hygiene station kit A

- 1 **one.r1** retractable bannerstand 31.5" x 79" (80 x 200 cm) with graphic
- 1 **hard case.M counter**

Budget-friendly version with **boost.** banner stand and vinyl graphic also available



Hygiene station kit B

- 1 **one.r1** retractable bannerstand 31.5" x 79" (80 x 200 cm) with graphic

Budget-friendly version with **boost.** banner stand and vinyl graphic also available



Hygiene station kit C

- 1 1' x 2' **wall.frame** (305 x 610 mm)
SEG Fabric graphic

6 Welcome kit & Hygiene station kit

Your design



Easily create your design: the artwork file already includes prevention guidelines

Send us your logo and background and we will customize it for you!

Adapting workspaces to the health crisis



1 **one.r1** retractable bannerstand
31.5" x 79" (80 x 200 cm)

Budget-friendly version with **boost.** banner stand and vinyl graphic also available



1 **hard case.M** counter



Portable partition kit

10 **contour.** 5 x 6.5 foot walls with double-sided pillowcase graphics a total of 50 linear feet



Panels can be connected at 45°, 90° or 180° to partition custom spaces

Lightweight, stable, and sets up in just a few minutes



Stationary partition kit

50 linear feet of ^{panoramic*}
_{h-line} dividers using 38"x 93" panels
Double-sided graphics. Available for rent or purchase

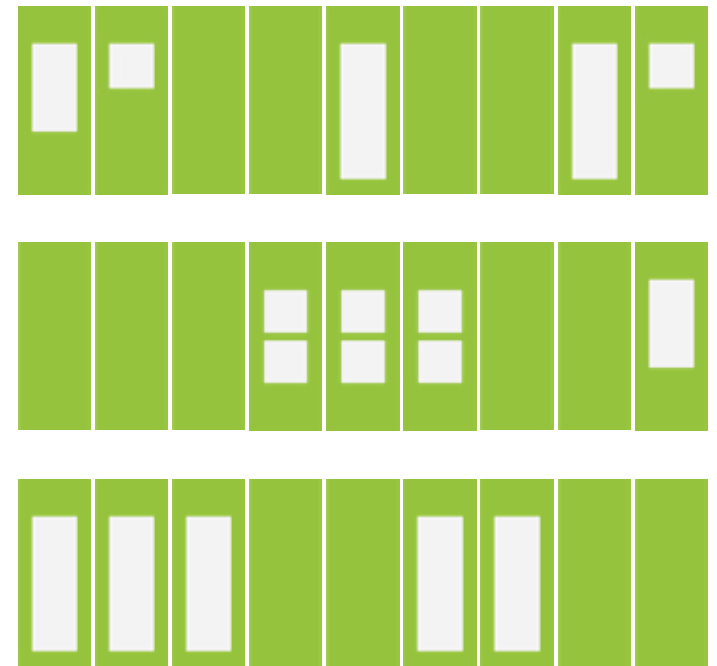


NEW: panoramic h-line panels with transparent sections
Panels can be connected at 90° or 180°
Delivered in a transport crate. Graphics are pre-installed for quick assembly.



Stationary partition kit

NEW: Combine 4 transparent partition models to allow light to pass through while remaining hygienic



Many accessories and options available: TV, shelves, doors, lights, etc.



10 Stationary partition kit

panoramic®
n-line

Different textures available

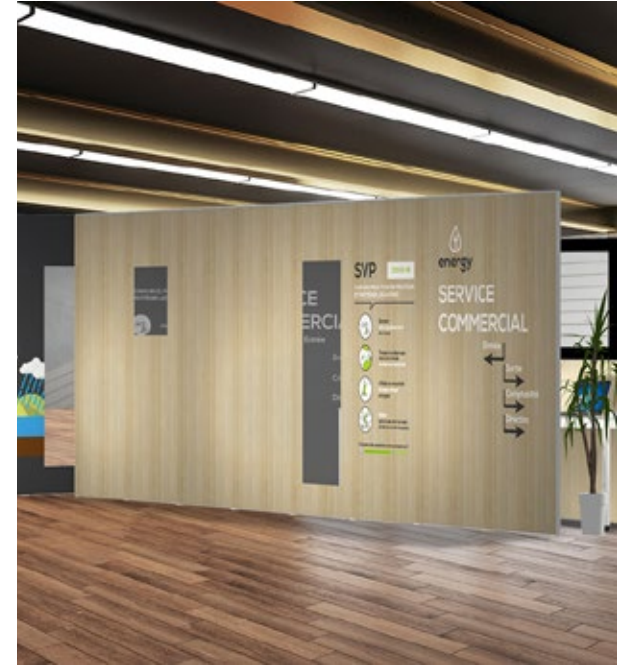
Adapting workspaces to the health crisis



Concrete



Brick



Wood



White Brick



Stone



Ivy

11

Portable half-wall partition kit

50 linear feet of half-wall ^{panoramic}_{in-line} dividers using 38"x 46" panels
Double-sided graphics. Available for rent or purchase



The most efficient solution to easily delimit spaces

Adapting workspaces to the health crisis



SVP

COVID-19
CORONA VIRUS, POUR SE PROTÉGER
ET PROTÉGER LES AUTRES



Se laver
les mains régulièrement
avec de l'eau et du savon



Utiliser un mouchoir
à usage unique
et le jeter



Éviter tout contact
direct avec les autres
ou leurs surfaces
personnelles



Éviter tout contact
direct avec les autres
ou leurs surfaces
personnelles

energy
SERVICE

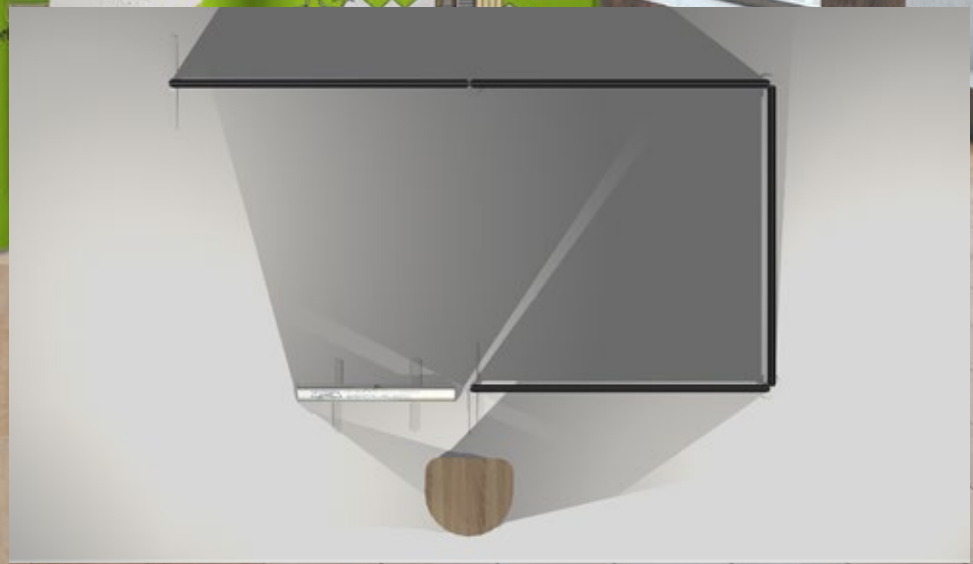
12 Portable changing room kit

- 4 **contour.** 5 x 6.5 foot panels
- + 1 **one.R1** retractable bannerstands
- + 1 **hard case.M counter**



Lightweight and easy to install

Adapting workspaces to the health crisis



13 Stationary changing room kit

- 3 38"x 93" panoramic[™] panels
- + 1 **one.R1** retractable bannerstands
- + 1 **hard case.M** counter



Uses the same panels as those in the stationary partition kit
Combine to suit your needs!

Adapting workspaces to the health crisis



14 2-desk divider kit

To place between desks

2 lower 38"x 46" frames

+ 2 top 38"x 38" transparent frames



New panoramic[®]
inline
transparent half-walls



15 4-desk divider kit

To place between desks

6 lower 38"x 46" frames

+ 6 top 38"x 38" transparent frames



New panoramic[®]
inline
transparent half-walls

Adapting workspaces to the health crisis



16 **contour.** barrier kit

24"x 24" contour structure



Lightweight and easy to move
contour barrier kit

Sets up within 2 minutes

Available in custom dimensions

Adapting workspaces to the health crisis



17 Benefits of our kits and partitions

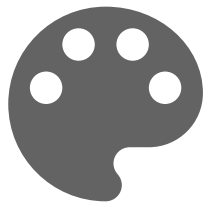
Adapting workspaces to the health crisis



Large quantities **in stock**, available quickly.



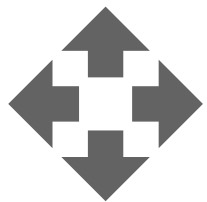
No training required: no technical expertise or tools required. **Simple and easy setup.**



Easily create artwork files thanks to a **library of customizable "prevention guidelines" and decor graphics.**



A lasting investment **that can be reused for events after the crisis.**



Arrange all spaces **in a scalable and reusable way.** Available **in custom dimensions.**



Lightweight aluminium frames covered in **changeable, washable fabric.**

duo.

UNLIMITED DISPLAY

duodisplay.com/us

Duo solutions are distributed exclusively through a network of certified dealers